



KEY FEATURES



Our solar cells offer high conversion efficiency to ensure the highest quality

Our high performing modules have an industry low tolerance of +5%

The modules can withstand high wind-pressure, snow loads and extreme temperatures

Passed IEC 5400 Pa mechanical loading test

QUALITY & SAFETY

Industry leading power output warranty

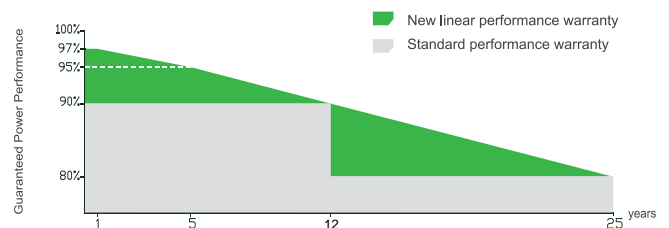
(12 years/90%, 25 years/80%)

10-year warranty on product materials and processing technology

ISO 9001:2008 (Quality Management System) certified factory

IEC61215 a IEC61730 certified products

Premium Performance Warranty



* Based on customer requirements and contract terms

ISO9001:2008, ISO14001:2004, OHSAS18001 certified factory

IEC61215, IEC61730 certified products



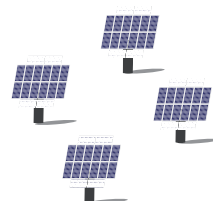
APPLICATIONS



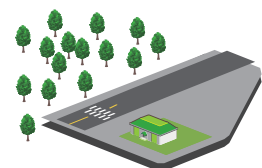
On-grid residential roof-tops



On-grid commercial/
industrial roof-tops

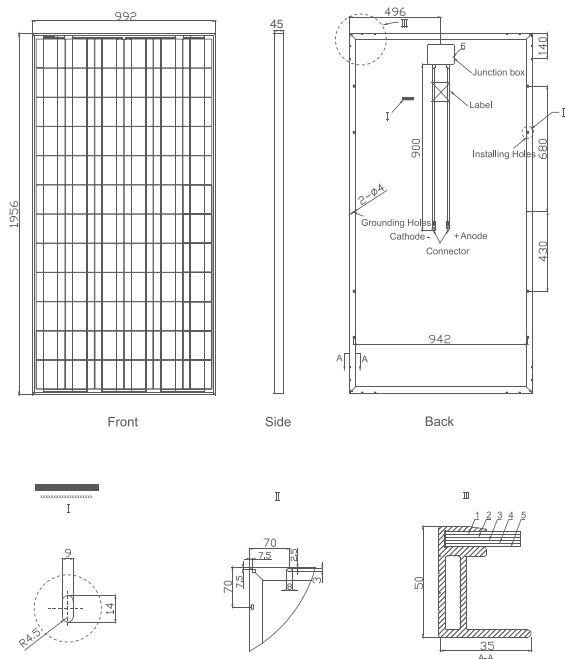


Solar power plants



Off-grid systems

Engineering Drawings



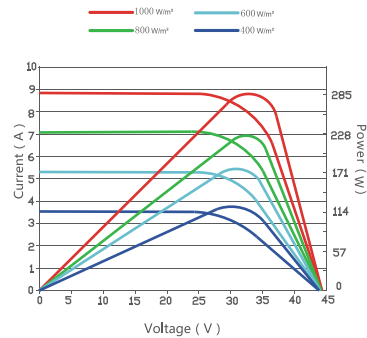
Packaging Configuration

(Two boxes =One pallet)

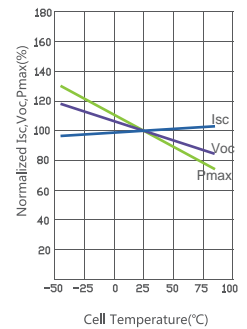
23pcs/box, 46pcs/pallet, 506pcs/40'HQ Container

Electrical Performance & Temperature Dependence

Current-Voltage & Power-Voltage Curves (285W)



Temperature Dependence of Isc, Voc, Pmax



Mechanical Characteristics

Cell Type	Poly-crystalline 156×156mm (6 inch)
No. of cells	72 (6×12)
Dimensions	1956×992×45mm (77.01×39.06×1.77 inch)
Weight	27.0 kg (59.5 lbs.)
Front Glass	3.2mm, High Transmission, Low Iron, Tempered Glass
Frame	Anodized Aluminium Alloy
Junction Box	IP65 Rated
Output Cables	TÜV 1×4.0mm² / UL 12AWG , Length:900mm

SPECIFICATIONS

Module Type	TKA-P280W	TKA-P300W
Maximum Power at STC(Pmax)	280Wp	300Wp
Maximum Power Voltage (Vmp)	36.2V	36.5V
Maximum Power Current (Imp)	7.73A	8.22A
Open-circuit Voltage (Voc)	43.4V	44.8V
Short-circuit Current (Isc)	8.34A	9.04A
Module Efficiency(%)	14.43%	15.46%
Operating Temperature(°C)	-40°C~+85°C	
Maximum system voltage	1000V (IEC) DC	
Maximum series fuse rating	15A	
Power tolerance	+5% (optional)	
Temperature coefficients of Pmax	-0.45%/°C	
Temperature coefficients of Voc	-0.27%/°C	
Temperature coefficients of Isc	0.05%/°C	
Nominal operating cell temperature (NOCT)	45±2°C	

STC: Irradiance 1000W/m²



Module Temperature 25°C



AM=1.5

* Power measurement tolerance: + 5%

